



Progress on Kent County's Goal of 90% Waste Reduction by 2030



Our Vision

20 x '20

20% diversion by 2020

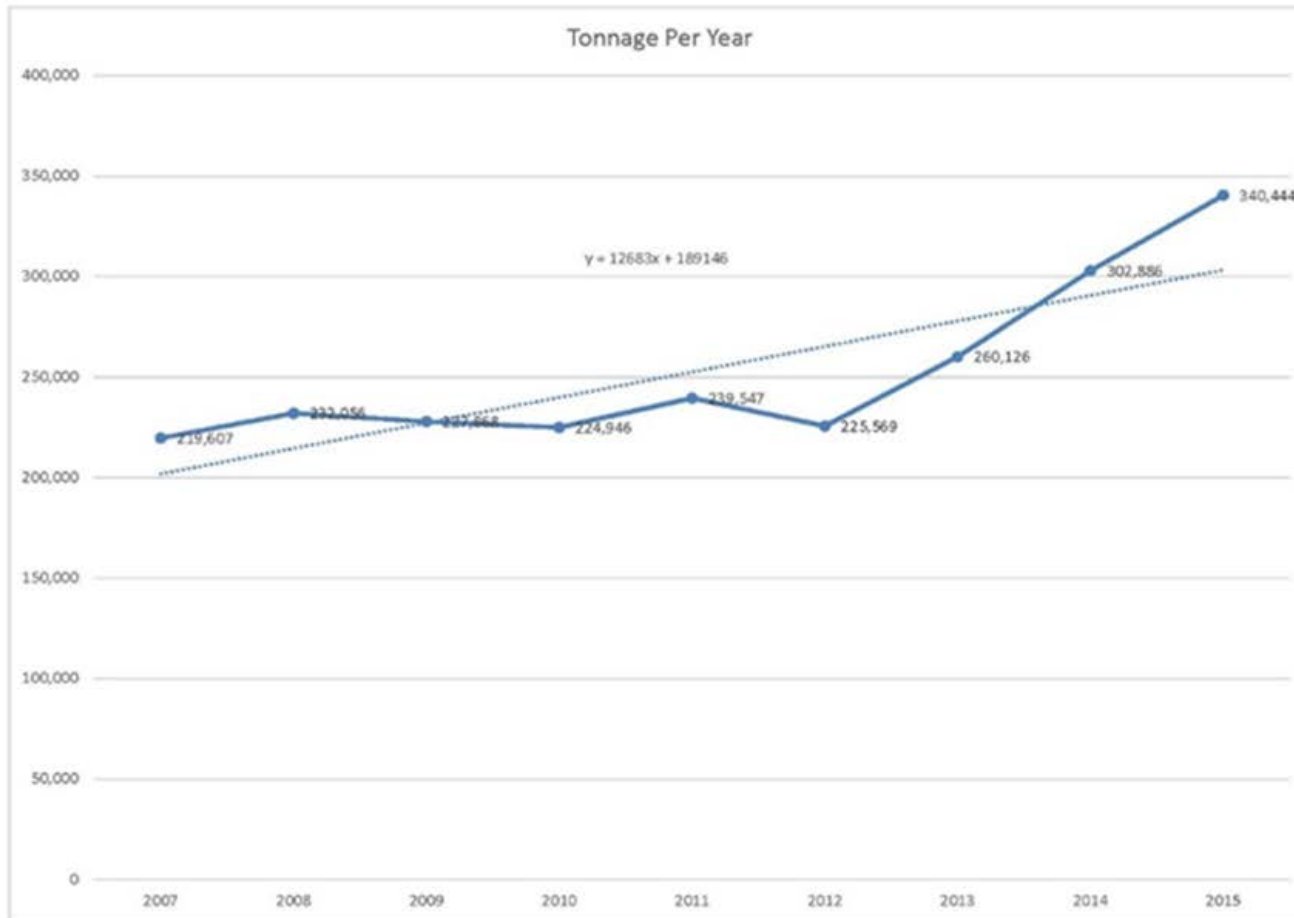
90 x '30

90% diversion by 2030



**KENT COUNTY
DEPARTMENT OF
PUBLIC WORKS**

South Kent Landfill Trends



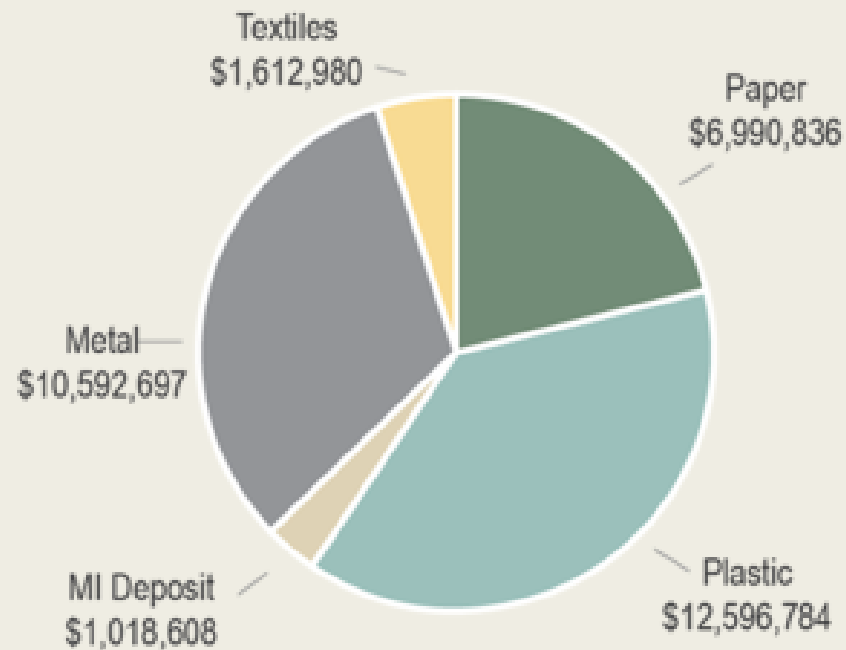


University of Michigan's Big House

Could be filled two times a year with
waste landfilled

\$32.8 Million Thrown Away Annually

FIGURE 6-10
Total Value Kent County MSW Disposed



Source: Economic Impact Potential and Characterization of Municipal Solid Waste in Michigan, December 2015 - WMSBF



**KENT COUNTY
DEPARTMENT OF
PUBLIC WORKS**

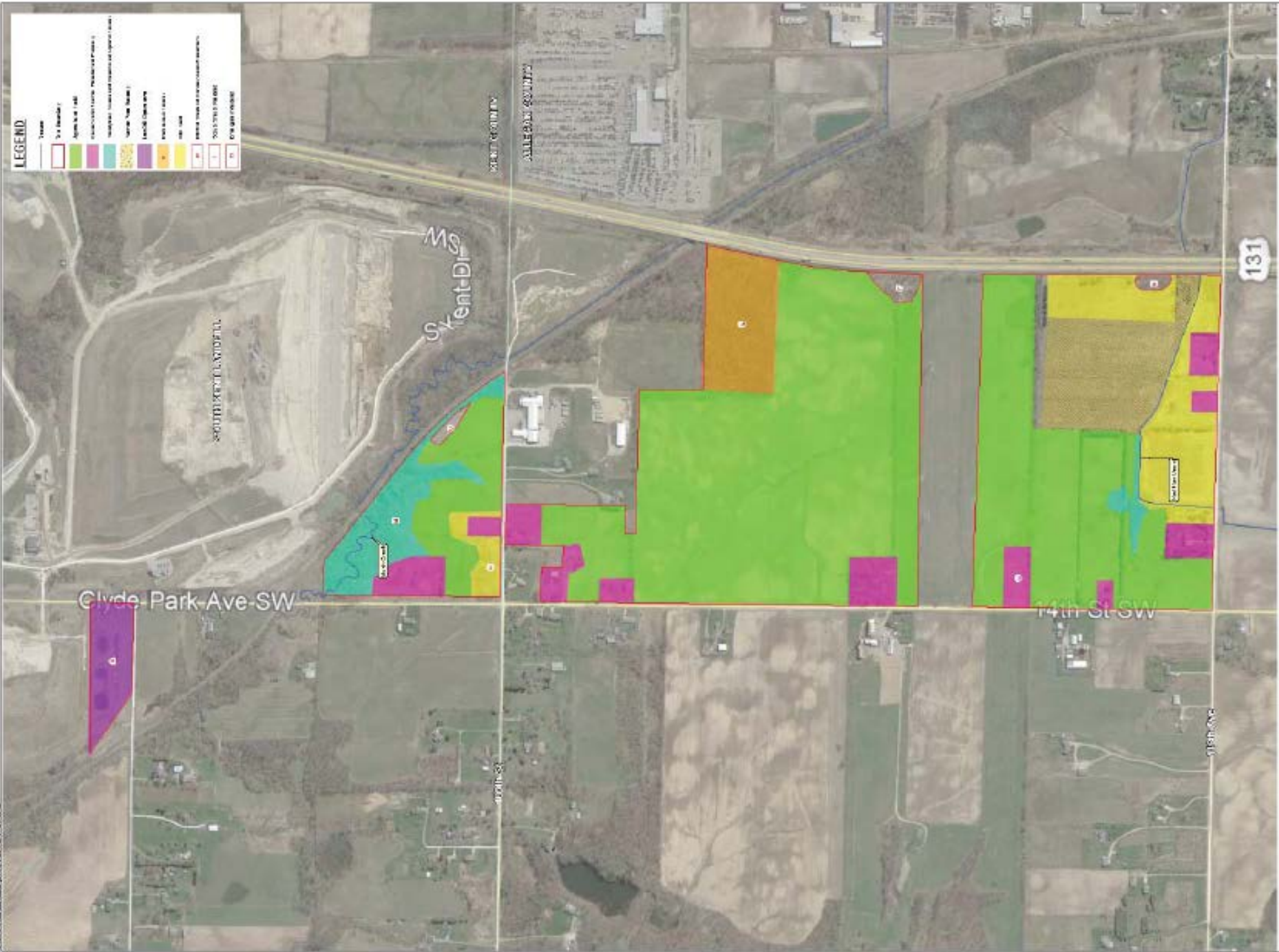


In January 2018, Kent County Department of Public Works (DPW) began tracking C+D loads at our North Kent Transfer Station in Rockford and South Kent Landfill in Byron Center. After a full year of high-level analysis consisting of a simple waste-type determination at the scale, we concluded that at least 17% of the waste that is accepted for disposal (by weight) is C+D material.

Construction + Demolition Load Tracking (2018)			
Could be reused as-is if the infrastructure existed.	South Kent Landfill	North Kent Transfer Station	Total tons received
Construction + Demolition (tons)	57,784.18	16,062.27	73,846.45
Total Tons Received	345,121.60	101,346.39	446,467.99
Construction + Demolition compared to Total Tons	17%	16%	17%

LEGEND

Stream	
	1st Order
	2nd Order
	3rd Order
	4th Order
	5th Order
	6th Order
	7th Order
	8th Order
	9th Order
	10th Order
	11th Order
	12th Order
	13th Order
	14th Order
	15th Order
	16th Order
	17th Order
	18th Order
	19th Order
	20th Order
	21st Order
	22nd Order
	23rd Order
	24th Order
	25th Order
	26th Order
	27th Order
	28th Order
	29th Order
	30th Order
	31st Order
	32nd Order
	33rd Order
	34th Order
	35th Order
	36th Order
	37th Order
	38th Order
	39th Order
	40th Order
	41st Order
	42nd Order
	43rd Order
	44th Order
	45th Order
	46th Order
	47th Order
	48th Order
	49th Order
	50th Order
	51st Order
	52nd Order
	53rd Order
	54th Order
	55th Order
	56th Order
	57th Order
	58th Order
	59th Order
	60th Order
	61st Order
	62nd Order
	63rd Order
	64th Order
	65th Order
	66th Order
	67th Order
	68th Order
	69th Order
	70th Order
	71st Order
	72nd Order
	73rd Order
	74th Order
	75th Order
	76th Order
	77th Order
	78th Order
	79th Order
	80th Order
	81st Order
	82nd Order
	83rd Order
	84th Order
	85th Order
	86th Order
	87th Order
	88th Order
	89th Order
	90th Order
	91st Order
	92nd Order
	93rd Order
	94th Order
	95th Order
	96th Order
	97th Order
	98th Order
	99th Order
	100th Order



A proposed C+D processing system in Kent County would bring a new scale and approach to recycling in West Michigan. Currently, there is limited recycling or recovery of these materials in the region. A C+D waste processing system would be designed to take unsorted (mixed) waste from construction or demolition sites and process this material to recover recyclable and recoverable materials in order to divert the waste from the landfill.

Negotiations with multiple local, national and international resource recovery/recycling companies are in progress to locate other technologies to the Sustainable Business Park with a goal of having the Park operational by 2021